

RECEIVED
LARAMIE COUNTY
CLERK OF COURTS
CHEYENNE, WY.

'87 SEP 2 AM 11 33

CERTIFIED LAND CORNER RECORDATION

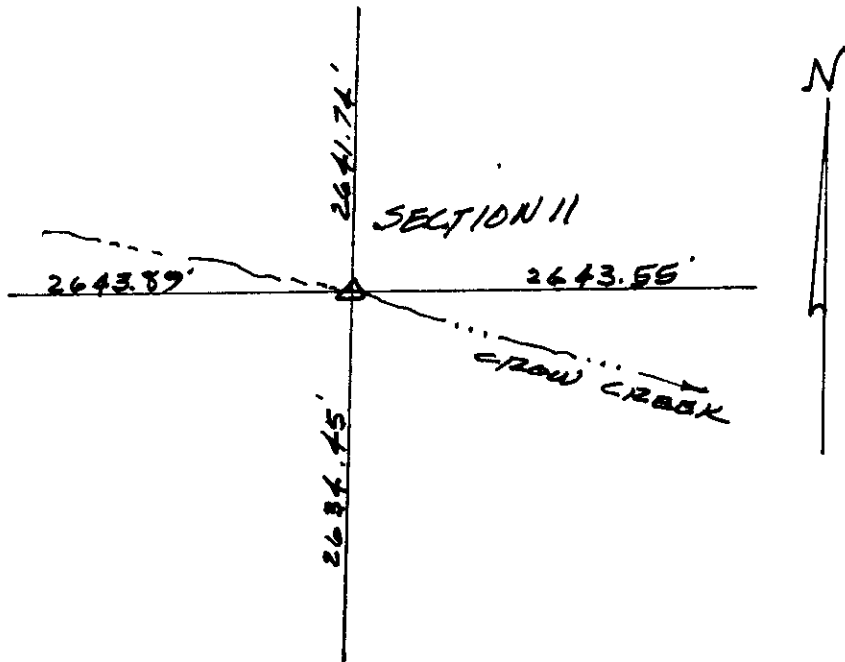
DESCRIPTION OF CORNER EVIDENCE FOUND, AND ORIGINAL RECORD (if known)

CENTER 1/4 CORNER
SECTION 11
T. 13N., R. 64W.
6TH P.M.
CORNER NOT FOUND

DESCRIPTION OF MONUMENT AND ACCESSORIES ESTABLISHED TO PERPETUATE THE ORIGINAL LOCATION OF THIS CORNER:

SET 5/8" X 18" REBAR WITH SURVEY CAP

SKETCH, WITH COURSE AND DISTANCE TO ADJACENT CORNER IF DETERMINED IN THIS SURVEY. (May Sketch or Paste Reproduction on Reverse Side.)



I, D. M. Hopkins certify that I have carefully performed or reviewed the work done on the diagrammed corner as reported on this recordation form and approve the same.

Ronald M. Hopkins 558
Signature of Surveyor Registration No.

STATE OF WYOMING,
Office of Clerk and Recorder,
County of Laramie

This "corner record" was filed for record on the 2 day of September, 1987, was noted on the cross-index plat and is assigned page No. _____, in book No. _____.

John C. Whitford
County Official
Cross Index No. G-19 T. 13 R. 64 Mer.
____ T. _____ R. _____ Mer.
____ T. _____ R. _____ Mer.
____ T. _____ R. _____ Mer.
____ T. _____ R. _____ Mer.
____ T. _____ R. _____ Mer.
____ T. _____ R. _____ Mer.